



# Bean Soup

## Entertainment & Stuff

"To Bean or not to Bean...?"

Volume 14 Number 2

April 2010 - June 2010

Free\*

### Brothers in Business

Brothers Barry and Brian Jessurun have been in business together since 1989 when together they opened the Vanilla Bean Café along with their sister, Eileen and their mother, Patricia. Since opening day, they have worked through the dynamics of running a family owned business in a small town in CT's northeast quiet corner. Time passed and the economy changed; goals were set and difficult decisions were made as the family business grew and changed.

Today, the Vanilla Bean Café is owned and operated by Barry and Brian Jessurun, who are successful in their work as both brothers and business partners. They remember their parents, who helped them make a start in the restaurant business, as gracious people. Their mother prepared and served meals seemingly all day



long to her family. She and her husband were well known for welcoming friends into the family home with a European hospitality that

she naturally emulated for her six growing children.

By definition, a winning business partnership capitalizes on the strengths and skills of each partner. Brian explains that he focuses on operations and maintenance and is quick to acknowledge that he is blessed to have Barry as a partner. And because his partner is his brother, Brian feels a sense of commitment that is lacking among most business partners. Barry is the tactical partner. He directs his attention toward strategic and long term business planning. He identifies realistic expectations for one another and open communication as key contributing factors to their success as a sibling partnership. Barry's trust in Brian enhances his freedom to be productive and focused.

Barry and Brian agree that the sibling partnership has its own set of benefits because it possesses all the strengths siblings enjoy: trust, familiarity, shorthand communication and shared values. Most business owners avoid hiring friends and family but Barry and Brian seem to have the right formula for making it work. They reflect their satisfaction with their busi-

ness relationship by making a practice of hiring friends and family.

Head Chef, Brett Laffert started working at the Vanilla Bean Café in 2004. Scott Laffert is Brett's brother and VBC's Prep Cook. Brett encouraged Barry and Brian to hire Scott indicating that they had enjoyed working together in the past. Scott says he appreciates the benefits of working with his brother. For example, he says there is a certain comfort level and that is a draw for him. Brett says that working with his brother enhances his enjoyment at work, allows for a more integrated life and fosters his ability to maintain a connection to Scott.



"It takes two men to make one brother." - Israel Zangwill.

## 85 Main Shuck-Off

*oyster shucking competition & shellfish celebration*

### Sunday May 2, 2010 12-6pm



More info  
www.85main.com  
for shucking contest  
rules & application

Food & Drink  
oysters wine  
mussels beer  
steamers sangria  
shrimp martinis  
clams margaritas

Live Music  
Uncle Rhubarb  
& the Hokum  
Hotshots  
The Doors of Deception



85 Main Street Putnam, CT  
860.928.1660 • www.85main.com

## By Katherine Designs

Katherine A. Pezzano

Interior Decoration & Design Consulting

Phone/fax (860) 923-5701

e-mail: [Bykatherinedsgn@aol.com](mailto:Bykatherinedsgn@aol.com)



space planning, blue-print review, color, material & product selection, sketches & drawings, custom drapery and bedding, accessorizing, room arrangements, etc...

PO Box 828 - No. Grosvenordale, CT 06255  
- By appointment only -

[www.longmeadowauto.com](http://www.longmeadowauto.com)

# LONGMEADOW Automotive

Quality Pre-Owned Vehicles & Service

92 Gary School Rd. Pomfret Center CT.

(860) 928-5363 Rich & Karyn DiBonaventura

"I can resist anything but temptation." - Oscar Wilde

## Arts & Framing The Loft and the Galleries

Custom framing experience,  
art & frame restoration,  
and great art!

Sheri Sochor

"The Difference is... I Care!"  
112 Main St. • Putnam, CT 06260  
860.963.0105

W-S 10-5, Sun 11-5

[www.artsandframingputnam.com](http://www.artsandframingputnam.com)



*Michael W. Smith*

**Transmissions  
& Auto Centers**  
Quality Used Cars



Certified Automotive Master Technician

Michael W. Smith  
Office 860-774-8421  
849 North Main Street  
Danielson, CT 06239

## The Vanilla Bean Café

Things we would like you to know...

The Vanilla Bean Café opened in 1989 with 16 seats.

The Café is owned by the **Jessurun Family**.


The Café is open 361 days each year - we close on:  
Easter Sunday, Fourth of July,  
Thanksgiving, Christmas Day

### Business Hours:

|            |                       |
|------------|-----------------------|
| Mon - Tue  | - 7:00 am - 3:00 pm   |
| Wed - Thur | - 7:00 am - 8:00 pm   |
| Friday     | - 7:00 am - 9:00 pm*  |
| Saturday   | - 8:00 am - 9:00 pm*† |
| Sunday     | - 8:00 am - 8:00 pm   |

\*We may close early during colder months.

†Entertainment night - serving dessert, beer & wine until 10:00 pm.

**Stella**, the English Mastiff you may have seen around the Café, passed away in August 2009. 

Web site: [www.TheVanillaBeanCafe.com](http://www.TheVanillaBeanCafe.com)

E-mail: [ask@thevanillabeancafe.com](mailto:ask@thevanillabeancafe.com)

Address: **Corner of Routes 44, 169 & 97  
Pomfret, Connecticut**

Phone: **860-928-1562**

Music booking: **Maria Sangiolo**  
[maria@thevanillabeancafe.com](mailto:maria@thevanillabeancafe.com)

Art booking: **Tiffany Siefert**  
[tif@thevanillabeancafe.com](mailto:tif@thevanillabeancafe.com)

Bean Soup ads: **Barry Jessurun**  
[barry@thevanillabeancafe.com](mailto:barry@thevanillabeancafe.com)

**Bean Soup** is an information and entertainment newsletter published by The Vanilla Bean Café.

Compiled and written by:

Barry Jessurun

Mary Murtha Dudley

Layout & Design - Barry Jessurun



© COPYRIGHT 2010 by Barry Jessurun, All rights reserved  
The Vanilla Bean Café Pomfret Connecticut 06258

## Accolades and Awards

### The New York Times

"The food...is freshly made, well seasoned and extremely tasty."

### The Boston Globe

"...great food - homemade soups, sandwiches, burgers, and the best fish cakes around - in a relaxed atmosphere."

### Yankee Magazine's Travel Guide to New England

"Editors' Pick" 1997, 2003 & 2004

"One of the outstanding reasons to visit New England."

### Connecticut Magazine Readers' Poll

Windham County - Various years

Best Family Dining - Best Sandwiches

Best Desserts - Best Business Lunch

Best Vegetarian - Best Outdoor Dining

### Norwich Bulletin - Dining Guide

Food: ★★★★★

Atmosphere: ★★★★★

### The Hartford Courant

"This is a place that serves excellent food and brings in some of the better performers on the New England coffee house circuit..."

"The Vanilla Bean Café in Pomfret is one of those rare places that truly has something for everyone..."

Oh, yes - the food is truly delicious, too."

### The New London Day

★★★

"The soups are homemade and delicious, the sandwiches unusual and served on breads that are positively delicious..."

### www.VisitingNewEngland.com

"the Vanilla Bean Café is one of those places you simply don't want to leave."

### www.HiddenBoston.com

"This impossibly funky Connecticut restaurant is full of character (and characters), and is truly in a class by itself."

### Recipient University of Connecticut's Nozko Family Business Leadership Award

Check the hallway by the restrooms - our Hall of Fame - for more articles, letters and awards.

## Our Sister Restaurant

*downtown dining at its best*

# 85 main

85 main

EXPANDED BAR  
FEATURING

## SUSHI MENU

~7 NIGHTS A WEEK~

NOW ALSO SERVING  
**draft beer**



*American Fusion Cuisine using fresh, local, organic ingredients...  
experience casual fine dining in a warm, contemporary atmosphere*

featuring the region's only raw bar with oysters and shellfish

alfresco dining ~ raw bar ~ late night bar menu

lunch, dinner, and bar menu daily from 11:30 am-11:00 pm

[www.85main.com](http://www.85main.com)

85 Main St. Putnam CT 06260 | 860.928.1660

*"Beer is proof that God loves us and wants us to be happy."*  
- Benjamin Franklin



330 Pomfret St. (Rt. 169)  
Pomfret Center, CT 06259  
(one mile south of the Vanilla Bean Café)

860-928-5492

[CelebrationsShoppes.com](http://CelebrationsShoppes.com)

### #1 Art Gallery Yankee Magazine

READER'S CHOICE AWARD 2010

"Best Place to Shop"  
NEW ENGLAND TRAVEL

"Great Gifts" CT MAGAZINE



Gifts in all price ranges.  
Fine art, jewelry, glass, home décor,  
stationery, tea & accessories.  
Gift Cards. Complimentary wrapping.

*The belly rules the mind. - Spanish Proverb*

## House Portraits



**Barbara Lussier**

[www.BarbaraLussierGallery.com](http://www.BarbaraLussierGallery.com)

[babsart@snet.net](mailto:babsart@snet.net) 860 805 3182



Earth friendly floral design

Opening April 1st

www.glimpseofgaia.com

130 Main Street  
Putnam, Connecticut

"I love Thanksgiving turkey...it's the only time in Los Angeles that you see natural breasts."

- Arnold Schwarzenegger

## Puzzled where to send your child? RECTORY'S ELEMENTARY SCHOOL



is the perfect fit.

Our educational pieces



- teach to children's strengths,
- promote sincere conversations,
- respect multiple intelligences,
- accept and honor families,
- appreciate faiths and cultures,
- and create lifetime memories.

Grades K-4

Admissions: 860-928-1328

528 Pomfret St., Pomfret, CT [www.rectorschool.org](http://www.rectorschool.org)

*Subliminal Message...  
Try us for dinner*

"That's something I've noticed about food: whenever there's a crisis if you can get people to eating normally things get better."  
- Madeleine L'Engle

## Experience the difference...

...it's so worth the trip



a Center for Yoga and Wellness

Ellen B. Schaeffer  
Route 6 Foster, RI/CT line  
[www.OneYogaCenter.com](http://www.OneYogaCenter.com)  
401-368-YOGA(9642)

- 25 years practice & 14+ years teaching
- Yoga classes all levels including gentle
- Integrative Yoga Therapy Teacher Training
- Hot room and Vinyasa/Power Yoga
- Private Yoga & Yoga Therapy
- Spiritual coaching and support
- Professional, compassionate service

## April Entertainment

### Friday - 2 - Open Mic



Hosts - Faith Montaperto & Eric Paradine. Feature - Kala Farnham is "paving the way for alternative folk rock music."

### Saturday - 3 - Andrew McKnight



Audiences are spellbound by entertaining stories delivered by **Andrew McKnight** with just the right touches of down home humor. His seemingly boundless energy moves around, one moment his dancing fingers, the next his impassioned delivery of a poignant lyric, followed by his playful rhythmic foot stomp to keep time. It begins with a dramatic cappella vocal, followed by a crisp and concise interlude of flat-picked guitar. Then the warm and supple tenor voice settles in to work, delivering literate and cinematic vignettes of rural Americans and their struggles in memorable melodies and compelling twists of phrase. The banter between songs is as much of the show as the music. With a theatrical flair for storytelling, he weaves the music and words into a memorable performance.

### Saturday - 10 - Meg Hutchinson

**Meg Hutchinson** is a lyric-based, contemporary acoustic songwriter. Her influences include poet Mary Oliver, songwriter Shawn Colvin, and David Gray. Originally from western MA, Hutchinson is now based in the Boston area. She has won numerous awards including recognition from John Lennon Songwriting Competition, Billboard Song Contest and competitions at Merlefest, NewSong, Kerrville, Falcon Ridge, Telluride & Rocky Mtn Folks Festivals. Whether singing about technology, billion dollar bailouts or global warming, Meg Hutchinson makes these big issues personal by showing how they affect our everyday lives. She goes beyond the casual observation of current events and explores the emotion behind the experiences, bringing the characters' inner lives out into the open.



### Sunday - 7 - Cocoa Bean for Kids Bob Bloom - Drumming About You

Kids join an interactive music hoot with a chance to play from an array of shake, rattle, and roll instruments!  
\$5.00 per child - Free Hot Chocolate

### Sunday - 11 Peter Mulvey

In every aspect of his career, **Peter Mulvey** draws on a broad swath of influences. He is reading, listening and eager to hear new poetry, modern minimalist composers, old-time fiddle tunes, Argentinean trip-hop, or top-shelf bar bands. Said The Irish Times: "Peter Mulvey is consistently the most original and dynamic of the US singer-songwriters to tour these shores. A phenomenal performer with huge energy, a quick fire, quirky take on life, and an extraordinary guitar style. A joy to see." Whether performing solo, duo




## April Entertainment

### Peter Mulvey

continued... (with David Goodrich), or even with a band, Mulvey attempts to be the sum of his parts, to draw on all the musical legacies he has studied, to make a fresh, vital moment out of everything he and the audience have brought to the table that night.

### Saturday - 17 - Paul Geremia




For more than forty years, **Paul Geremia** has survived solely by the fruit of his musical labors, having abandoned all other means of support in 1966. He has been travelling and performing throughout the US, Canada and Europe while earning a reputation as a first rate bluesman, songwriter, scholar of early jazz and blues, and one of the best country blues fingerpickers. With his six and twelve-string guitars, harmonica, piano and husky soulful voice and with an innate sense of the humor, he keeps his performance of traditional blues fresh and alive. Combining his interpretation of the earlier music of people like Blind Lemon Jefferson, Robert Johnson, Blind Willie McTell, Scrapper Blackwell and Blind Blake, with his original compositions, he has created a style which is very much his own. Geremia's superb recordings have made him a critical favorite and place him firmly among the legends who inspired and influenced him over the past four decades.

### Friday - 23 - Middle School Open Mic

Middle School Open Mic feature **Hayley Readrdon** is a 7th grader from Marblehead, MA. She has been writing her own songs and has her own CD. This Open Mic is open to all performers in grades 5-8. Participants sign up for one or two performance slots as they arrive. Performers must be accompanied by a parent (no drop-offs). This a great opportunity for young people to perform for friends and peers.

### Saturday - 24 - Michael Troy



**Michael Troy** was born and raised in Fall River, MA. In many ways, his life reflects the lives of the hard-working common folk who populate this part of New England. Having spent parts of his own life as a mill worker, fisherman, laborer and carpenter, and most of his adult years as a husband and father, Michael has traveled many paths, and the experience and wisdom he's gleaned along the way echoes through his music. Michael has won many awards for his music, including most recently the Boston Folk Festival Songwriter's Contest and the Founders Title Folk and Bluegrass Festival Songwriter's Contest in 2004, the South Florida Folk Festival Songwriter's Contest in 2005, and Michael was the winner of the 2006 Wildflower Folk Festival Songwriter's Contest.

## WE'VE BEEN AT THIS 'GREEN' THING A LONG TIME

### DOES YOUR LANDSCAPER BRING:

- Knowledge gained in the field and as a graduate from a highly respected agricultural college — the UMass Stockbridge School;
- A staff fine-tuned with continuing course work and educational seminars;
- Clear, detailed quotes for home and business customers;
- A record of reliability, cleanliness and complete consideration for the place where you're working and living ...

DESIGN / CONSTRUCTION / MAINTENANCE

Montigny  
**LANDSCAPING**  
Science and art, naturally.

Established 1987

For beautiful results and care, call Calvin:  
(508) 347-5682 [www.montignylandscaping.com](http://www.montignylandscaping.com)

Major credit cards accepted

*"I bought a doughnut and they gave me a receipt for the doughnut... I don't need a receipt for the doughnut. I give you money and you give me the doughnut, end of transaction. We don't need to bring ink and paper into this. I can't imagine a scenario that I would have to prove that I bought a doughnut. To some skeptical friend, 'Don't even act like I didn't get that doughnut, I've got the documentation right here... It's in my file at home. ...Under "D".'"*

- Mitch Hedberg

**William M. Maykel, D.C., D.I.B.A.K.**

**Diplomate**

**International Board of Applied Kinesiology**

Painless whole body chiropractic care - given with low force respiratory adjustments to maximize patient comfort and response, for both acute injuries and chronic problems

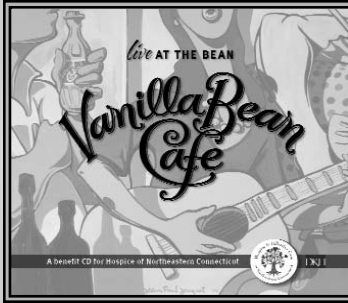
[www.drbill.meta-ehealth.com](http://www.drbill.meta-ehealth.com)

Nutritional diagnostic testing, and detoxification programs,

31 Auburn Street  
Auburn, MA 01501  
508-832-0768

1 Washington Street; Suite 206  
Wellesley, MA 02481  
781-239-1115





Live at the Bean

Benefit CD  
for Hospice

Makes a Great Gift

\$20.00



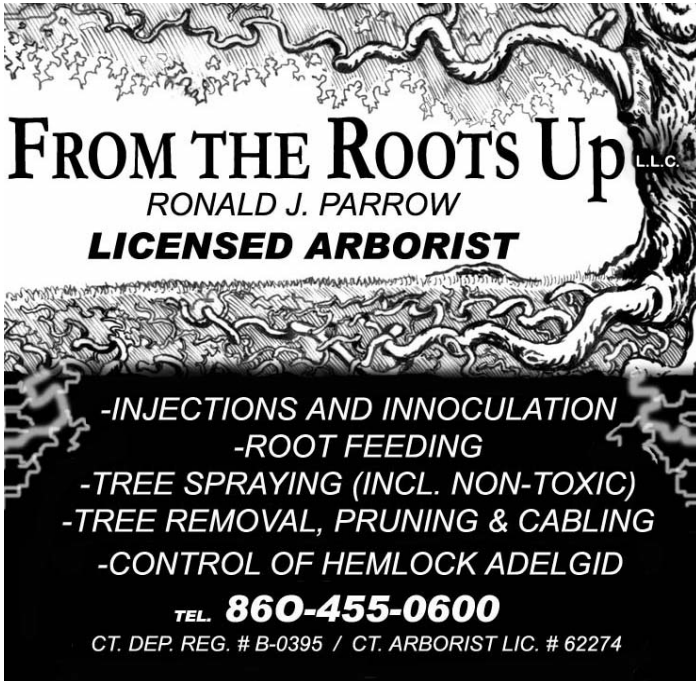
**Pomfret  
Spirit Shoppe  
&  
Wine Shed**



Purveyors of Fine Wine,  
Beer & Spirits

Route 169 Pomfret CT 06258 **860-928-2946**

**FROM THE ROOTS Up** L.L.C.  
RONALD J. PARROW  
**LICENSED ARBORIST**



- INJECTIONS AND INNOCULATION
- ROOT FEEDING
- TREE SPRAYING (INCL. NON-TOXIC)
- TREE REMOVAL, PRUNING & CABLING
- CONTROL OF HEMLOCK ADELGID

TEL. **860-455-0600**

CT. DEP. REG. # B-0395 / CT. ARBORIST LIC. # 62274

*"One cannot think well, love well, sleep well, if one has not dined well." - Virginia Woolf*

## GIVE THE GIFT OF HEALTH

PURCHASE FOR YOURSELF OR SOMEONE YOU LOVE

an Audio CD on  
**'Mindful Eating - Making Peace with Food' or  
a Gift Certificate for a nutritional consultation**

Shoshana Levinson, a medical nutritionist, has been helping people just like you, over 24 years, using lifestyle therapy and nutritional supplements.

**Shoshana Levinson, MS, DN  
Nutritionist & Wellness Coach  
(860) 429-4624**



[www.EatwellUSA.com](http://www.EatwellUSA.com)

## May Entertainment

**Saturday - 1 -**

**Brian Peters & Jeff Davis**

**Brian Peters** is a performer of traditional English folk music who combines a high level of skill on 3 different instruments with a great voice and an energetic stage presence. He plays anglo-concertina players, melodeon, and guitar. Brian is also recognized internationally as a leading singer of traditional ballads. Described as "One of British folk music's finest ambassadors", he started out in the folk clubs of England and has taken his performances to stages all over the world, always retaining a deep commitment to the musical traditions of his native country. **Jeff Davis** is one of America's most respected collectors and interpreters of traditional music. He has traveled far to visit "source singers" -farmers and miners who remembered the old songs and tunes -and closer at hand to libraries and archives, always look for the best of the music that was once common in out towns and villages. Jeff plays fiddle, banjo, mandocello, guitar, spoons, jaw's harps and a few instruments hand-made by some folk craftsmen. He has toured extensively throughout the United States as well as in Canada, England, Ireland, The Netherlands, and Norway.



**Friday - 7 - Open Mic**



**Hosts - Faith Montaperto & Eric Paradine. Feature - Shawn Taylor** - "My intention is to give enjoyment to others. If a song can find a way to your heart, put a smile on your face, or just brighten your day in some way, my goal has been reached!"

**Saturday - 8 -**

**Sally Rogers & Maria Sangiolo**

**Maria Sangiolo** has been enchanting folk audiences with her warm stage presence and mellifluous vocals for the past twenty years. Maria's deeply emotive soprano vocals have inspired comparisons to Joan Baez, Shawn Colvin and Carolyn Hester. The *St. Paul Pioneer Press* noted that "Sangiolo's voice is clear as crystal." *The Boston Globe* praised her "pure, honest soprano that makes you believe everything she sings." Fueled by her heart warming vocals, rich narrative song writing and deft guitar playing, Maria's albums are intimate and engaging.

**Sally Rogers** performs an evening of traditional, contemporary and original ballads and song, interwoven with stories taken from her life as a performer, a wife and a mother. Throughout her concerts, she accompanies herself on guitar and Appalachian dulcimer, or performs without accompaniment in a voice that needs no further enhancement. Reviewer's have described her voice in superlatives ranging from "remarkable" to "mesmerizing." Her performance includes compositions of her own many of which are considered classics of the folk and popular



## May Entertainment

### Sally Rogers & Maria Sangiolo

continued... genre. "She is one of our best traditional singers...her voice strong and gorgeous, her feet firmly planted in tradition, her vision urgent and clear." - *The Boston Globe*

### Saturday - 15 - Hugh Blumenfeld



**Hugh Blumenfeld** has been called "a songwriter's songwriter," ranging from romantic ballads to biting satire. The Boston Globe described his work as "words and music full of passion and poetry" while Ed McKeon calls him "as sharp a political and social satirist as any songwriter writing today." Hugh began working as a musician full time in 1994, touring 100-150 days a year and teaching workshops and artist residencies. The CT Commission on the Arts selected him as a Master Teaching Artist in 1995 and named him CT's official State Troubadour for 1999 and 2000. He performed often for the Department of Mental Retardation and volunteered at the American Cancer Society's Camp Rising Sun. Increasingly, his interests in music and teaching/healing led him back to his early interest in medicine. He finished medical school in 2007 with plans to become a family doctor.

### Saturday - 22 - Les Sampou



**Les Sampou** writes and sings Americana music: twangy, bluesy, rockin', sliding, passionate. Les Sampou's music career has spanned five recordings and countless listening rooms, bars, and festivals, as well as over several hundred thousand miles of road. Les, with her big voice and big guitar, grabs your attention playing as a solo act or with a band. Whether writing, or performing, she can switch on a dime. Her chameleon style fits any genre. Her lyrics make sense and will hit you hard. It is for these reasons, along with her downright sexy charm, she remains a fixture on the music scene. After a sabbatical leaving a half dozen years between releases, Les Sampou is back with her shiny new 'roots & roll' album "Lonesomeville"...and she's better than ever.

### Saturday - 29 - Joel Cage



"With husky, heart-felt vocals and an aggressive acoustic guitar style reminiscent of Steve Stills, his performances offer more than the standard bill-of-fare of most folk singers, and more musicality and sensitivity than your average rock band. Somewhere in between, with a comprehensive knowledge of both, **Joel Cage's** performances are both powerfully energetic, and subtly moving. He is evocative, mesmerizing, and totally musical, a showman with miles of experience behind him, and an honesty that is truly engaging." - *Black Mountain*. Joel is a three-time First Prize Winner - USA Songwriting Competition.

PLAN WELL.  
INVEST WELL.  
LIVE WELL.™



JAMES WEISS, AAMS, RLP &  
LAURENCE HALE, AAMS, CRPS

**W H** WEISS & HALE  
FINANCIAL, LLC

697 POMFRET STREET (RT 169)  
POMFRET CENTER, CT 06259  
TEL 860.928.2341  
WWW.WEISSANDHALE.COM

\*SECURITIES AND ADVISORY SERVICES OFFERED  
THROUGH COMMONWEALTH FINANCIAL NETWORK  
MEMBER FINRA/SIPC. A REGISTERED INVESTMENT ADVISER.



**TSANJOURES  
Building Co., LLC**

CUSTOM BUILT HOMES

Putnam, CT  
George Tsanjoures  
860-928-4928

Pomfret, CT  
Ted Tsanjoures  
860-974-0325

*Worries go down better with soup. - Jewish Proverb*

Pomfret  
Healing Center & Spa



GIFT  
CERTIFICATES  
AVAILABLE

• REFLEXOLOGY  
• MASSAGE THERAPY  
• CRANIOSACRAL THERAPY  
• MUD WRAPS & FACIALS

79 MASHAMOQUET ROAD  
POMFRET CENTER, CT  
WHERE RT. 101 & 44 MEET  
**860.963.0846**  
WWW.POMFRETCENTERSPA.CO



**Builders of Fine Traditional  
NEW ENGLAND BARNs**  
Specializing in Post & Beam Construction

*Also offering:*  
Retail Lumber, Planing Services, and  
Beautiful Pine Shavings for Bedding



**Ken and Evan Sigfridson, Owners**

125 Fitzgerald Road, Brooklyn, CT 06234  
Tel. 860-774-2075 • Fax. 860-774-3554  
sigfridson@junio.com

[WWW.SIGFRIDSON.COM](http://WWW.SIGFRIDSON.COM)

*Subliminal  
Message...*

*Try us for  
Dinner*

*"One of the very  
nicest things about  
Life is the way we  
must regularly stop  
whatever it is we are  
doing and devote our  
attention to eating".*

*- Luciano Pavarotti*

*"Cheese - milk's leap toward immortality."*

*- Clifton Fadiman*

**THE Lily Pad**  
Custom Picture Framing  
Art Supplies  
Order online  
[www.lilypadart.com](http://www.lilypadart.com)

34 North St., Willimantic, CT 06226  
Open M - F 10:30 - 5:30  
Thurs to 7PM Saturday 10:30 - 4

(860) 423-3223

*"Nothing would be more tiresome than eating and drinking if God had not made them a pleasure as well as a necessity."*

*- Voltaire*

**Logee's**  
Tropical Plants

141 North Street  
Danielson, Connecticut 06239  
860-774-8038  
[www.logees.com](http://www.logees.com)

*"A greenhouse that makes you go Wow!" - Eileen Jessurun*

## June Entertainment

### Friday - 4 - Open Mic



**Hosts - Faith Montaperto & Eric Paradine. Feature - Martha Reich** - Martha's angelic voice, along with her lyrical poetry, will touch you deeply and take you on a hypnotic and soothing journey. soothing journey.

### Saturday - 5 - Atwater-Donnelly

**Aubrey Atwater and Elwood Donnelly**, the highly acclaimed husband-wife duo, present delightful programs of traditional American and Celtic folk songs, a capella pieces, old-time gospel songs, dance tunes, and original works. Elwood and Aubrey blend gorgeous and unusual harmonies and play guitar, Appalachian mountain dulcimer, mandolin, tin whistle, harmonica, banjo, bones, spoons, limberjacks, and other surprises including Appalachian clog dancing, French Canadian footwork, and Tap. "Atwater-Donnelly are marvelous musicians. Their voices blend beautifully, their instrumental work is sparkling, and they are captivating performers. I could listen to them for hours."- Frank Dudgeon, WUMB, Boston, MA.



### Saturday - 12 - Rob Lutes

**Rob Lutes** is a soulful singer-songwriter from Montreal with an ever-growing collection of literate, moving meditations on life and love. His ability to encapsulate universal ideas and questions, even the subtle ones, coupled with his gritty, heartfelt delivery and world-class performance chops, have invited comparisons with several legends in the roots genre from John Hiatt to Fred Eaglesmith. Lutes, a former Kerrville New Folk songwriting winner went into the studio in September 2008 to record his much-awaited fourth CD with noted Boston-area producer David Goodrich (Chris Smither, Peter Mulvey, Jeffrey Foucault). The result, the just-released CD Truth & Fiction, is his most confident work to date. Widely known for his inspiring and impassioned live performances. Rob Lutes's live shows always feature extraordinary playing, some improvisational magic and Lutes's intense, soulful vocals.



*"Nothing takes the taste out of peanut butter quite like unrequited love."*

*- Charlie Brown*

### VBC Review Quotables...

**"Extremely Tasty" Food** - *New York Times*


**"Relaxed" Atmosphere** - *Boston Globe*

**"Truly Bizarre" Service** - *New London Day*




## June Entertainment

### Sunday - 13 - Jake Armerding




The Boston Globe calls singer-violinist **Jake Armerding** “the most gifted and promising songwriter to emerge from the Boston folk scene in years.” “This is organic music,” the Boston singer-songwriter-violinist offers about his fifth album of originals, *Her*. “It’s a bunch of us playing our instruments and singing, and getting taped while we’re doing it. There’s no pitch correction, no chemicals, no nothing.” Armerding, along with some of the best players on the East Coast scene, holed up in a studio in North Reading, MA just before last Christmas, got completely snowed in, and made some beautiful, raucous, lasting music. Armerding confides, “For years I’ve been trying to get away from love songs -- everybody writes them, they’re the easiest to write, all that stuff. But then I fell in love and got married, so it wasn’t really an option.” Singer and songwriter Mark Erelli, a long-time friend and colleague who contributed guitar and vocal tracks to the project, commented, “It’s pretty great to listen to a whole record of love songs and not hear any of the usual love song cliches.”

### Saturday - 19 - Mad Agnes



**Mad Agnes** is not one person, but three, and they’re mad in only the most inventive way. Margo Hennebach, Adrienne Jones and Mark Saunders stir up elements of classical and folk, cross singer/songwriter poignancy with street-theatre smarts and infuse it all with courageous harmonies, complex counterpoint and rich storytelling in a powerful live performance. Their lyrics are intelligent, their delivery warm, and insightful. Not surprisingly, each has arrived at the trio from a long list of solo accomplishments. Their lyrics, vocal intricacies and instrument prowess make their music “music for thinking people.” They’ve been called genre-bending - with classical, rock and old-world backgrounds they play everything from contemporary original to madrigals, to Celtic traditionals, to harmony-driven folk pop.

### Saturday - 26 - Chuck E. Costa



**Chuck E. Costa**’s candid and visceral delivery of literate and well-crafted contemporary folk tunes has steadily raised his profile on the national club, coffeehouse and festival circuits. Last year, Chuck released his third independent release “Where the Songs Come From.” Chuck teamed up with Mark Thayer of Signature Sounds to create an album of rich arrangements that stay true to the heart of each of Chuck’s candid and visceral songs. The opening track was selected to be featured on a compilation released by *Hear Music* in every Starbucks in North America. The album appeared on Billboard charts its first week of release.

Fine 18<sup>th</sup> & 19<sup>th</sup> Century  
**REPRODUCTION WALLPAPERS**  
free CD-ROM catalog for VBC patrons,  
just email us! [eracette@snet.net](mailto:eracette@snet.net)



*“In order to make an apple pie from scratch, you must first create the universe.”*  
- Carl Sagan

*For the Complete Care of your Historic Home*

## CAMPION & HOLDRIDGE LLC RESTORATIONS

*Structural Frame Repairs  
Post and Beam Reproduction*

*Specializing in Architectural Details*

- Exterior & interior moldings • Millwork
- Plastering and repairs • Siding • Wood roofs

**Larry Campion**

109 Hammond Hill Rd  
Hampton, CT 06247

860•455•9416

Fully Insured CT Lic.# 560961

*“Why does Sea World have a seafood restaurant?? I’m halfway through my fish burger and I realize, Oh my God....I could be eating a slow learner.”*

- Lynda Montgomery

**OLD  
WOOD**  
WORKSHOP

- ◆ Antique Flooring ◆
- ◆ Vintage Building Materials ◆
- ◆ Architectural Antiques ◆

[www.oldwoodworkshop.com](http://www.oldwoodworkshop.com)

*Giving  
old wood  
new life™*

**Thomas Campbell**  
193 Hampton Rd.  
Pomfret Center  
Connecticut 06259

860-655-5259

Fine Crafts: Art for Contemporary Living

H A Z E L W O O D

WEARABLES • JEWELRY • GLASS • CERAMICS  
WOOD • METAL • LEATHER • FIBER ARTS

12 PUTNAM ROAD POMFRET, CT 06258  
860.928.5888

On Route 44, at the intersection of Routes 169 and 97

*"Tomatoes and oregano make it Italian; wine and tarragon make it French. Sour cream makes it Russian; lemon and cinnamon make it Greek. Soy sauce makes it Chinese; garlic makes it good."* - Alice May Brock

**We want to Expose you**

*by Spreading the Word with Imprintables*

*Fund Raising, Business Trade shows, Corporate Giving, Weddings & More*

**Empower your Logo, or Make it Personal**



**Impress Products**  
Promotional products & Advertising Specialties

860.974.1440  
860.949.2609

*"Life's uncertain, eat dessert first."*

*"Worthless people live only to eat and drink; people of worth eat and drink only to live."* - Socrates

**Recording Studio in Pomfret, Connecticut**  
Specializing in Acoustic Contemporary,  
Jazz & Classical



**Mark Thayer**  
Producer/Engine Ear

Phone 860-974-2016  
mark@signaturesounds.com  
www.signaturesounds.com

## Weekend Breakfast

A full breakfast menu is served Saturday and Sunday from 8:00 am - 12:00 noon. We offer a variety of specials including Brie Benedict, Ham and Jalapeño Burrito, and Pumpkin Cranberry Pancakes. We use only 100% maple syrup and top-quality bacon. ☺

## Dinner at The Bean

We are open for dinner Wednesday - Sunday nights. Each night we run four or five dinner specials. Recent items include: Sweet & Sour Beef Skewers, Shepherd's Pie, Baked Eggplant, and Maple Glazed Scallops. We offer a truly quality dinner at a great price, in a warm and friendly atmosphere. If you haven't tried us for dinner yet, it's time you did. ☺

## The Artwork Gallery

The Café displays artwork by local artists year round. Some shows have openings and some do not. Most of the artwork displayed is for sale and often prices are listed with the piece or on a list located in the room. One hundred percent of the sale price goes to the artist.

**April - Northeast Art Guild**  
**May - Denise Melucci**  
**June - Marcia Donofrio**



## Entertainment

The Café is on the National Folk Music Circuit and attracts talent from all over the United States while featuring mainly New England performers. The majority of the shows are on Saturday night and start at 8:00 PM. Our Open Mic night is on the first Friday of each month. During shows, a theatre curtain separates the listening room from the tiled dining room and kitchen in an effort to keep the music in and the kitchen noise out. ☺

## On-Site WiFi

We provide complimentary wireless internet service. Bring your lap top to the Café, search for available networks and log on to the VBC. Get some work done or check your email while you eat lunch! ☺

Gilly's Art

Classes for  
adults & kids  
in  
painting, drawing,  
mixed media



1 mile from the Vanilla Bean

Gilly Gordon 974-1140

## Our Pricing Practices

**1. Sales Tax Included** - Our prices include the 6% Connecticut Sales Tax. The prices listed on the menu are exactly what you pay. Our prices may seem to be inflated; however, a \$8.50 menu item is actually \$8.02 + \$.48 sales tax. Furthermore, this practice makes it easier for the customer, especially if that customer is a child who has exact change for a cookie. What you see is exactly what you pay - what could be simpler?

**2. Not Market Standard Pricing** - We are not trying to fool the customer into thinking that \$7.95 is less expensive than \$8.00. We find this type of pricing insulting to our customers. However, the reason it is used so extensively around the nation is that it works effectively. We don't like that practice, and we also like to believe that our clientele is not so easily fooled.

**3. No Pennies, Dimes or Nickels** - Because our prices include tax and we do not price in the standard way, we do not have to use pennies, dimes or nickels. This is a service to both the customer and to us. We don't give you lots of change, and we only have to use quarters and fifty-cent pieces. This also helps our staff to be more efficient performing transactions, which saves time and money. An added bonus is that we don't have to count change at the end of the business day.

*"There is no Love sincerer than the Love of Food."*

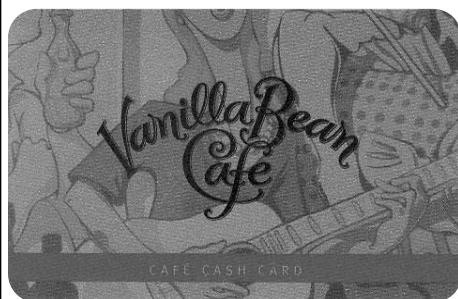
*- George Bernard Shaw*

*"What is patriotism but the Love of the Food one ate as a child."*

*- Lin Yu Tang*

## The Café Cash Card

The first Café Cash Card was introduced in 1997. The appearance of the card has changed since then, but our card still works like the gift cards available in most stores today. Café Cash Cards may be purchased in any amount at the restaurant or online and



are reloadable - add to the card balance at any time! Cards may be used to purchase any menu item at Vanilla Bean Cafe. A bonus of 10% is

added to the card balance when you purchase a card for \$100 or more. The card must be presented to redeem it at the time of purchase. The Café Cash Card makes a great gift for friends and family members and is ideal for students at the local schools. Café Cash Cards have no expiration date.

## ANANDA YOGA STUDIO

860-974-2392

Bloom into Bliss with Saravapa® Yoga



- Group/Private Classes
- Embodiment Yoga Therapy
- Yoga Therapy Treating Pain
- Meditation Course

Tish Roy, csyt, ryt, csmt

176 Old Turnpike Road, Woodstock Valley, CT 06282

[www.anadayogastudio.com](http://www.anadayogastudio.com)

*"Never work before breakfast; if you have to work before breakfast, eat your breakfast first."* - Josh Billings



SolarWrights®  
Earth Friendly Energy™

SOLAR PV \* SOLAR THERMAL \* WIND

Local: 860-535-3370 Toll-Free: 866-682-0514

E-mail: [info@solarwrights.com](mailto:info@solarwrights.com)

[www.solarwrights.com](http://www.solarwrights.com)

*"Cooking is like love, it should be entered into with abandon or not at all"* - Harriet van Horne



MARTHA'S HERBARY

ACCESSORIES IN AND OUT OF THE GARDEN

589 POMFRET ST. • P.O. BOX 236 • POMFRET • CT • 06258 • 860-928-0009

Performance Horse  
Problems?  
We can help.



EGGLESTON EQUINE, LLC

Equine Veterinary Medicine, Lameness Examination,  
Purchase Examination

In performance horse riding, sometimes horses are injured. Sometimes horses do not fulfill their talent or expectations. We can help. Eggleston Equine is a progressive veterinary practice offering the highest level of lameness evaluation, diagnostics and treatment.

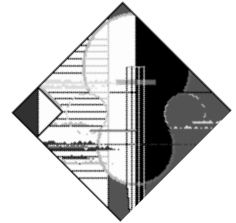
DIGITAL RADIOGRAPHY, DIGITAL ULTRASONOGRAPHY, SHOCK WAVE THERAPY,  
VIDEO ENDOSCOPY, STEM CELL THERAPY, IRAP & PRP TREATMENTS,  
IN-CLINIC SERVICE

860.942.3365

[www.egglestonequine.com](http://www.egglestonequine.com) • [dr@egglestonequine.com](mailto:dr@egglestonequine.com)

**Did you know...**

We have been open for over 20 years - 1989-2010. We serve breakfast on Saturday & Sunday. The Bean offers a variety of vegetarian specials. You can view our Daily Specials on our website. All of our menu prices include 6% CT Sales Tax. **85 Main** in Putnam is our sister restaurant. We have Gluten free items available. We are open 361 days each year. Fans on Facebook provided food quotes for this issue. Are you a Fan?



WiFi available in Dining Room



"To Bean or not to Bean...?"  
...is it really a question?

Pomfret CT 06258  
P O Box 206



Find us on Facebook

2010... What's Happening at The Bean ... 2010  
2010 Calendar listings  
\* Les Sampou - CD Release - May 2nd \*  
\* Jake Armerding - June 13th \*

**What's Happening at "The Bean"...**



All shows start at 8:00 PM unless otherwise noted

- **Friday April 2nd** Show Time 7:30 pm - \$5.00  
Open Mic - Kala Farnham
- **Saturday April 3rd** - \$12.00  
Andrew McKnight
- **Friday April 9th** Show Time 7:30 pm - \$5.00  
Songwriter Sessions - Lisa Martin hosts  
Sweet Bitters, MaryAnn Rossoni & Billy Mitchell
- **Saturday April 10th** - \$12.00  
Meg Hutchinson
- **Sunday April 11th** Show Time 4:00 pm - \$5.00  
Cocoa Bean for Kids  
Bob Bloom - Drumming
- **Sunday April 11th** Show Time 7:00 pm - \$15.00  
Peter Mulvey  
Hayward Williams Opens
- **Saturday April 17th** - \$15.00  
Paul Geremia
- **Friday April 23th** Show Time 7:00 pm - \$5.00  
Middle School Open Mic - Hayley Reardon
- **Saturday April 24th** - \$12.00  
Michael Troy
- **Saturday May 1st** - \$15.00  
Brian Peters with Jeff Davis
- **Friday May 7th** Show Time 7:30 pm - \$5.00  
Open Mic - Shawn Taylor

Call ahead, shows are subject to change

- **Saturday May 8th** - \$15.00  
Sally Rogers & Maria Sangiolo
- **Friday May 14th** Show Time 7:30 pm - \$5.00  
Songwriter Sessions - Lisa Martin hosts  
Dave Murphy, Talia Segal & Jon McAuliffe
- **Saturday May 15th** - \$12.00  
Hugh Blumenfeld
- **Saturday May 22nd** - \$15.00  
Les Sampou - CD Release
- **Saturday May 29th** - \$12.00  
Joel Cage
- **Friday June 4th** - \$5.00  
Open Mic - Martha Reich
- **Saturday June 5th** - \$15.00  
Atwater-Donnelly
- **Friday June 11th** Show Time 7:30 pm - \$5.00  
Songwriter Sessions - Lisa Martin hosts  
Kristen Graves, Marc VonEm & Guy-Michael Grande
- **Saturday June 12th** - \$12.00  
Rob Lutes
- **Sunday June 13th** Show Time 7:00 pm - \$12.00  
Jake Armerding
- **Saturday June 19th** - \$15.00  
Mad Agnes
- **Saturday June 26th** - \$10.00  
Chuck E. Costa